

# Sardine Can Sewing Pattern

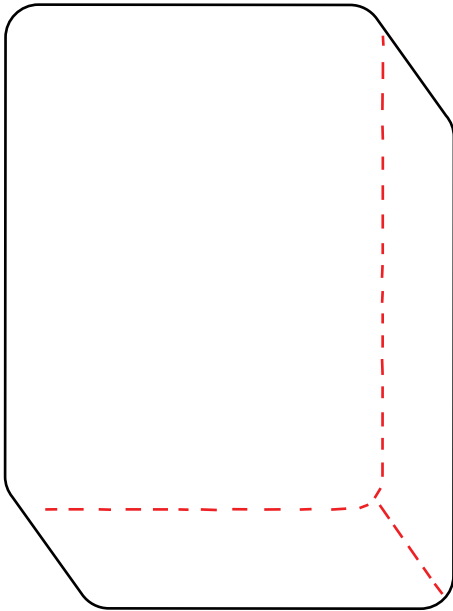


Black lines: Cut around black lines to cut out pattern pieces

Red lines: These lines indicate where to add embroidery stitch details

Gray lines: These lines indicate the placement of pieces on the base

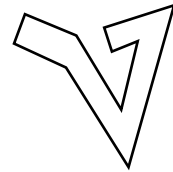
Sardine Can  
X1  
(Light Gray)



Sardine can label  
X1  
(Red)



Sardine can handle  
X1  
(Dark Gray)



Sardine fish one  
X1  
(Light Blue)



Sardine fish two  
X1  
(Light Blue)



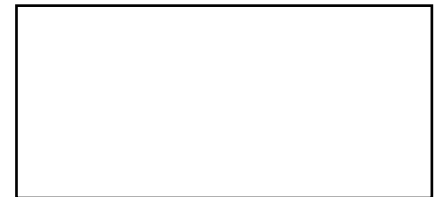
Sardine fish Three  
X1  
(Light Blue)



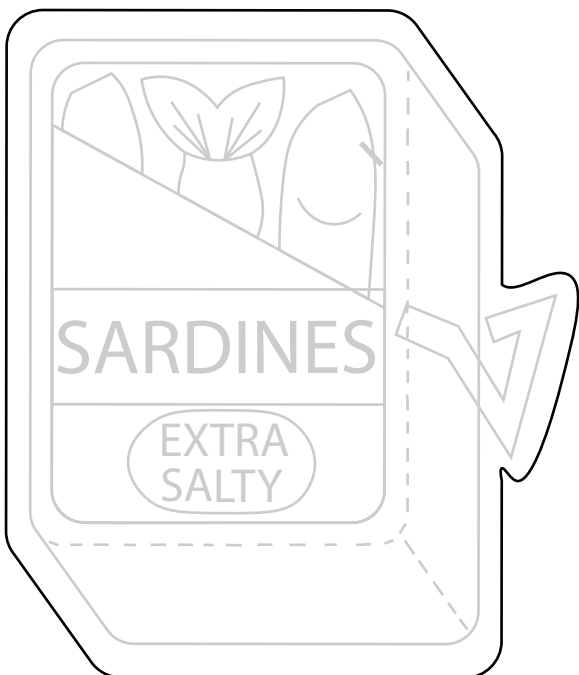
Sardine can salt label  
X1  
(White)



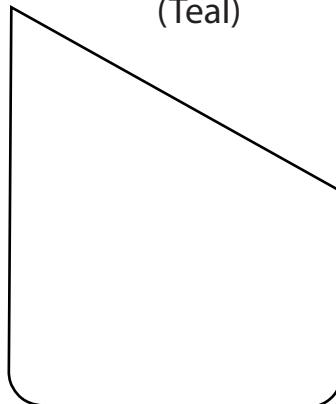
Sardine rolled lid  
X1  
(Light Gray)



Sardine can base  
X1  
(Teal)



Sardine can Top  
X1  
(Teal)



Sardine can opening  
X1  
(Dark Gray)

